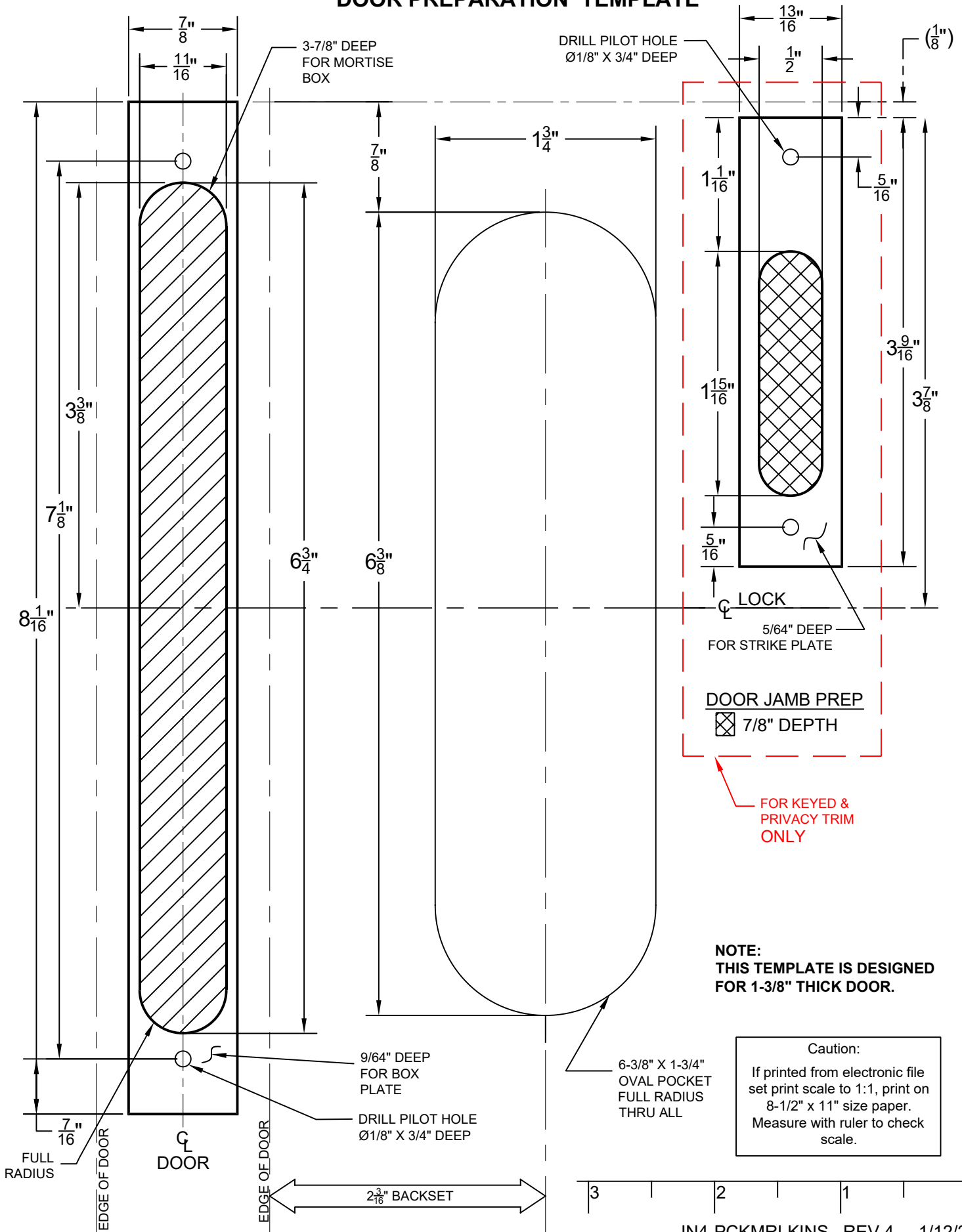


NARROW OVAL & NARROW MODERN RECTANGULAR POCKET DOOR MORTISE DOOR PREPARATION TEMPLATE



Narrow Oval & Narrow Modern
Rectangular Pocket Mortise

PM

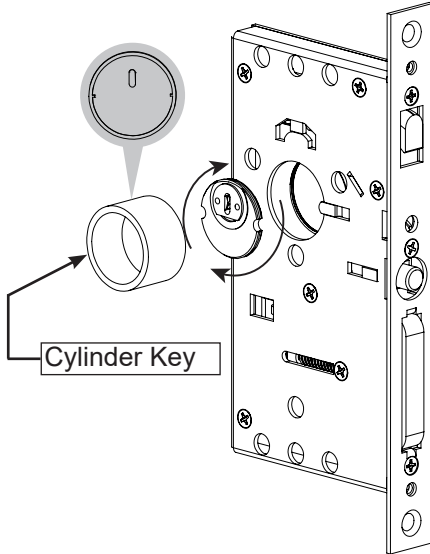
Narrow Oval & Narrow Modern
Rectangular Pocket Mortise

PM

1. Thread Drive Bar Cylinder

Use Cylinder Key to thread Drive Bar Cylinder clockwise on interior side of door.

Inside

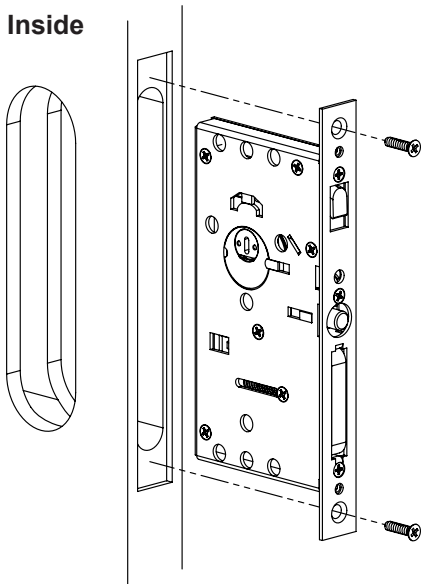


Cylinder Key

Note: Notches on cylinder must be parallel with the horizontal plane when screwed flush into lock body.

2. Install Lock Body

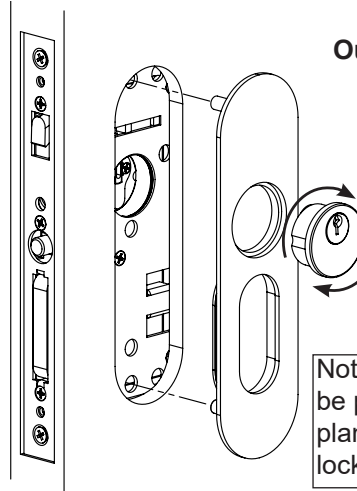
Inside



See template for door prep specifications

3. Install Outside Plate and Thread Key Cylinder

Outside



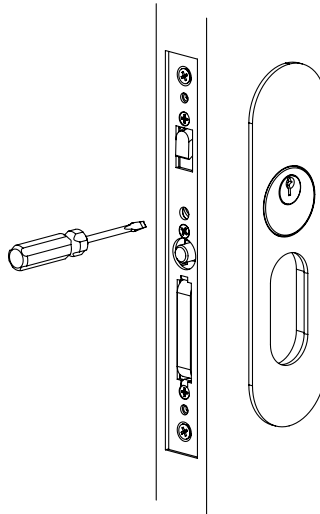
TRIMS VARY
NARROW OVAL SHOWN

Install Key Cylinder by threading it clockwise onto lock body plate.

Note: Key Cylinder notches must be parallel with the horizontal plane when fully screwed into lock body.

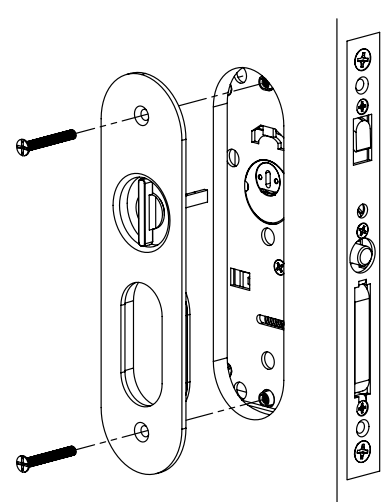
4. Tighten Key Cylinder

Tighten locking screw to engage notches on cylinder

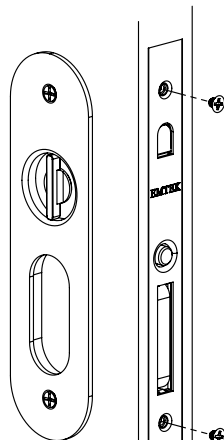


5. Mount Inside Plate

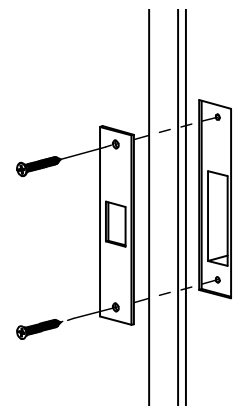
Inside



6. Install Trim Plate



Door Jamb Prep.



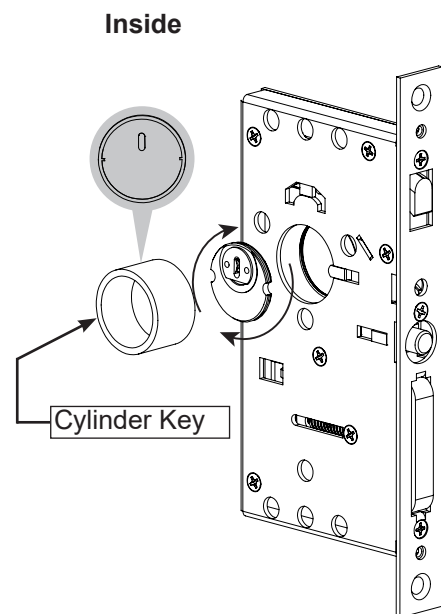
See template for door jamb prep specifications

EMTEK Privacy Function Installation Guide

Narrow Oval & Narrow Modern Rectangular Pocket Mortise

1. Thread Drive Bar Cylinder

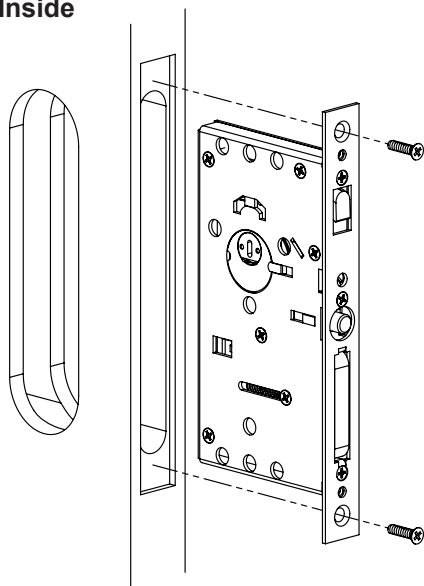
Use Cylinder Key to thread Drive Bar Cylinder clockwise on interior side of door.



Note: Notches on cylinder must be parallel with the horizontal plane when screwed flush into lock body.

2. Install Lock Body

Inside

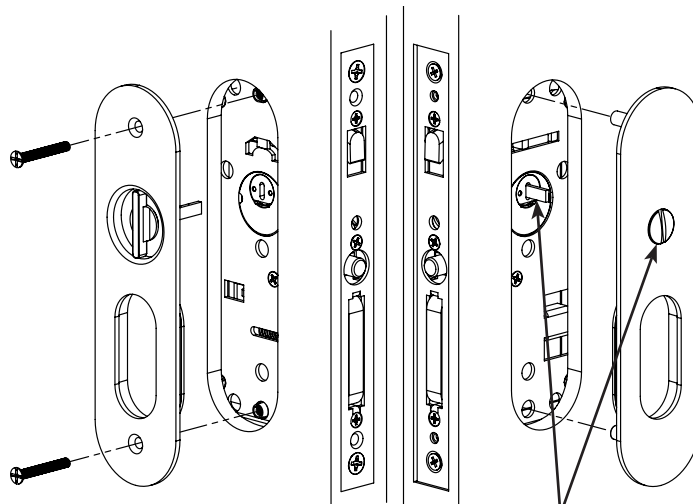


3. Install Inside and Outside Plates

Inside

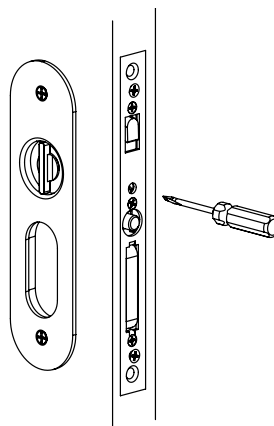
TRIMS VARY NARROW OVAL SHOWN

Outside



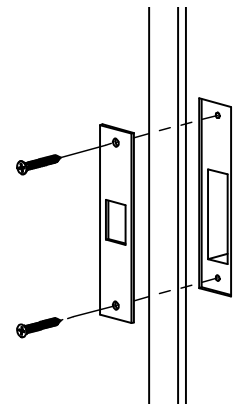
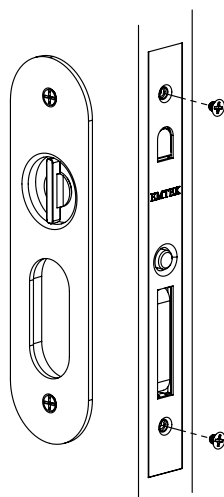
4. Tighten Drive Bar Cylinder

Tighten locking screw to engage notches on cylinder



5. Install Trim Plate

Door Jamb Prep.



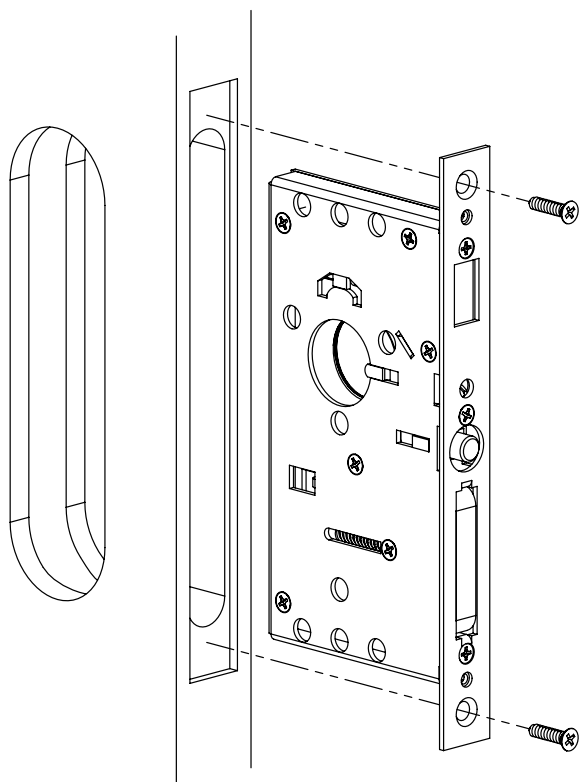
See template for door jamb prep specifications

EMTEK® Passage/Dummy Function

Installation Guide

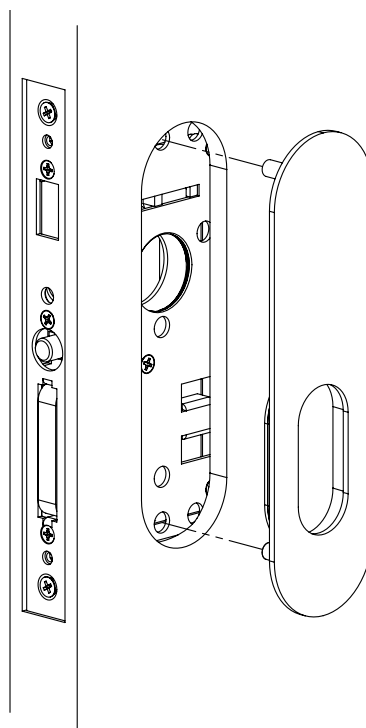
Narrow Oval & Narrow Modern Rectangular Pocket Mortise

1. Install Lock Body



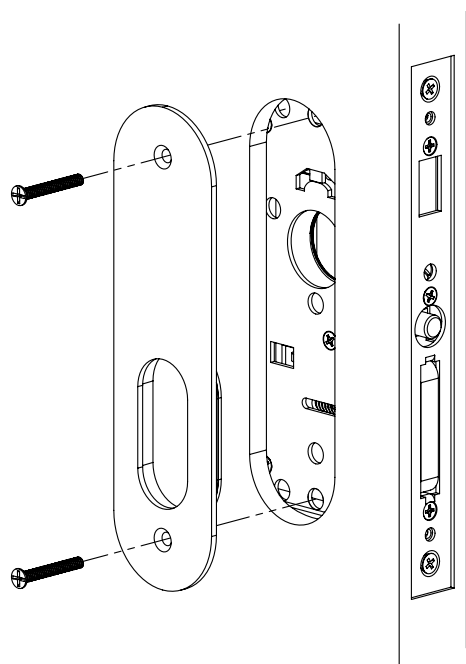
See template for door prep specifications

2. Install Outside Plate

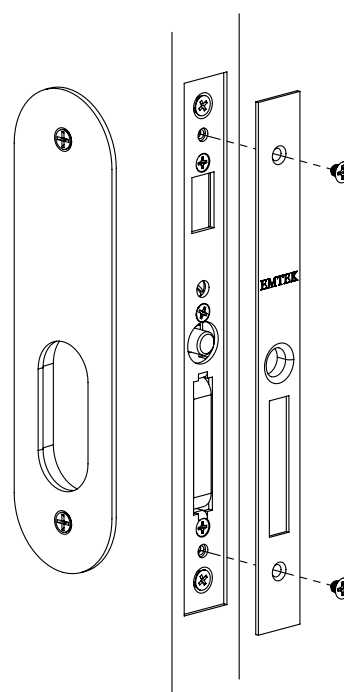


TRIMS VARY
NARROW OVAL SHOWN

3. Install Inside Plate



4. Install Trim Plate



Passage Trim shown